

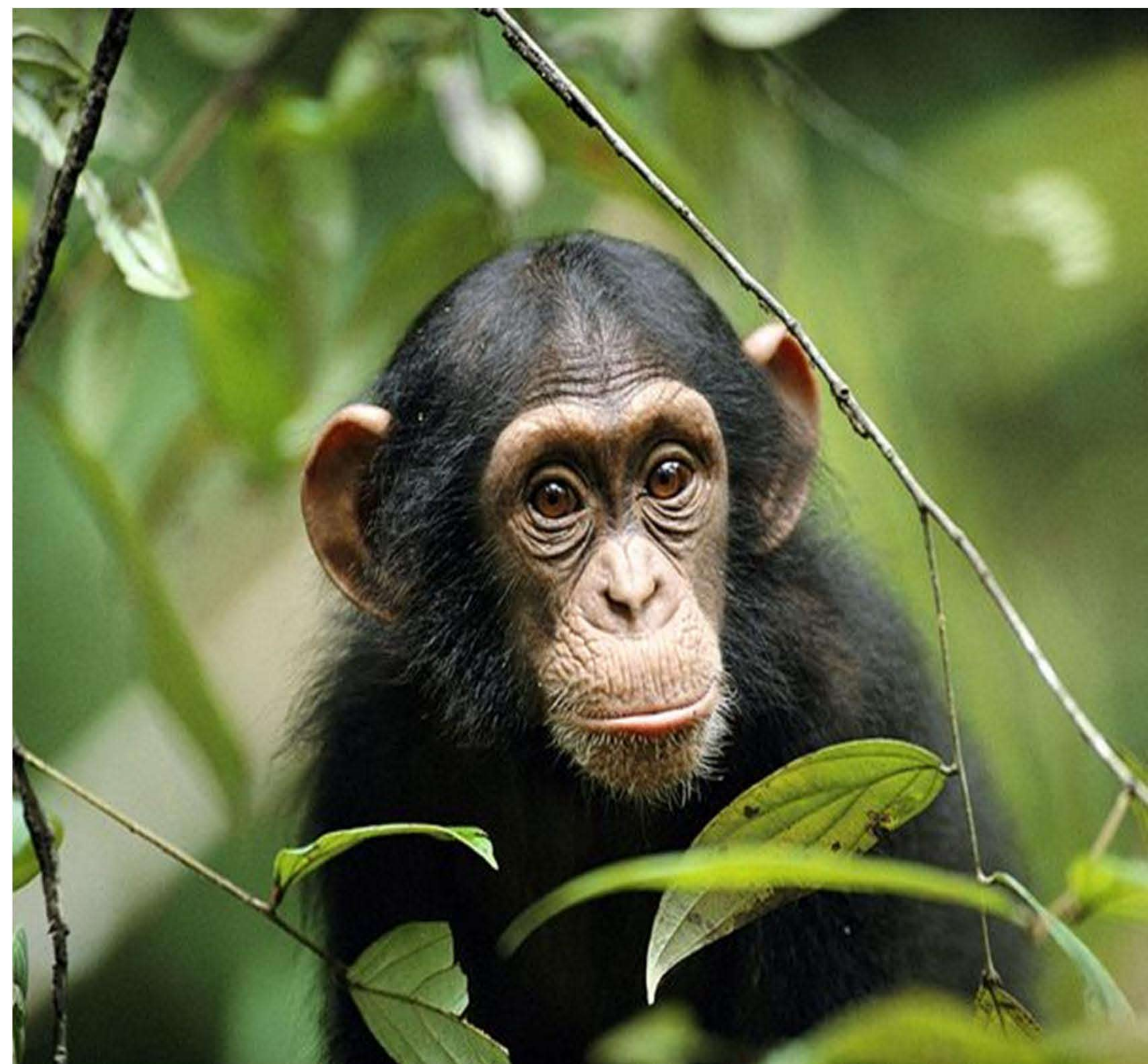


Chimpanzee

Pan troglodytes

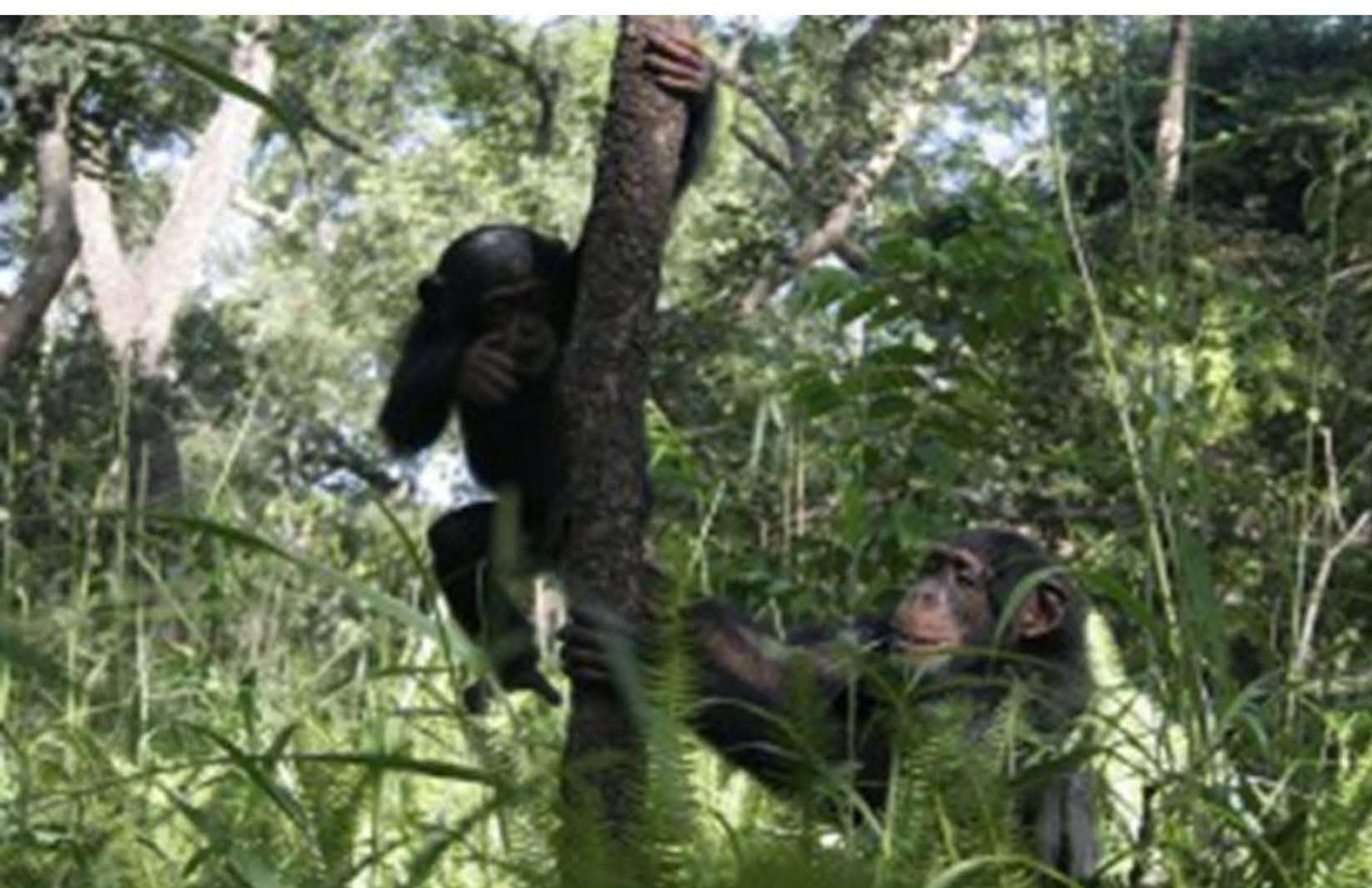
Description: Members of Hominidae family along with gorillas, humans and orangutans. Although they normally walk on all fours (knuckle-walking), chimpanzees can stand and walk upright. By swinging from branch to branch they can also move quite efficiently in the trees, where they do most of their eating. Chimpanzees usually sleep in the trees as well, employing nests of leaves.

Conservation: Chimps are an endangered species. The number of chimps in the wild is steadily decreasing. The wilderness areas necessary to their survival are disappearing at an alarming rate as more forests are cut down for farming and other activities. As the human's closest relative the chimp is vulnerable to many of the same diseases, and their capture for medical research contributes to their decline, especially in West Africa. As more forests are cut down for farm activities. In addition, recent outbreaks of the incurable disease Ebola hemorrhagic fever, threaten to decimate important chimpanzee populations in the Republic of Congo and Gabon.



Diet: Chimpanzees are omnivores, meaning they eat a wide variety of foods that includes fruits, nuts, seeds, and insects. Chimps occasionally hunt and eat meat.

Distribution and Habitat: Chimpanzees can be found in 21 African countries. An estimated 100,000 to 200,000 chimpanzees remain in the wild. Chimps prefer dense tropical rainforests but can also be found in secondary-growth forests, woodlands, bamboo forests, swamps, and even open savannah. Chimps are mainly found in rain forests and wet savannas. While they spend equal time on land and in trees, they do most of their feeding and sleeping in trees. Habitat destruction is the greatest threat of the chimpanzee. Large population decreases are also blamed on hunting and commercial exportation.



Behavior: Chimpanzees make tools and use them to acquire foods and for social displays; they have sophisticated hunting strategies requiring cooperation, influence and rank; they are status conscious, manipulative and capable of deception; they can learn to use symbols and understand aspects of human language including some relational syntax, concepts of number and numerical sequence; and they are capable of spontaneous planning for a future state or event. Chimps communicate in a manner similar to human non-verbal communication, using vocalizations, hand gestures, and facial expressions.

Jackson Zoo : The Jackson Zoo is proud to participate in Species Survival Plan (SSP) breeding program. 'Mojo' (to the right) was born on March 8, 2009 at the Jackson Zoo. 'Mojo' is the offspring from 'Jo-Jo' and 'Missy'.

Predators and Threats: Did You Know?

- Chimpanzees use large sticks and branches as clubs or throw them at enemies like leopards and humans.
- Chimps supplement their diets with meat, such as young antelopes or goats. Their most frequent victims, however, are other primates such as young baboons, colobus monkeys and blue monkeys.

